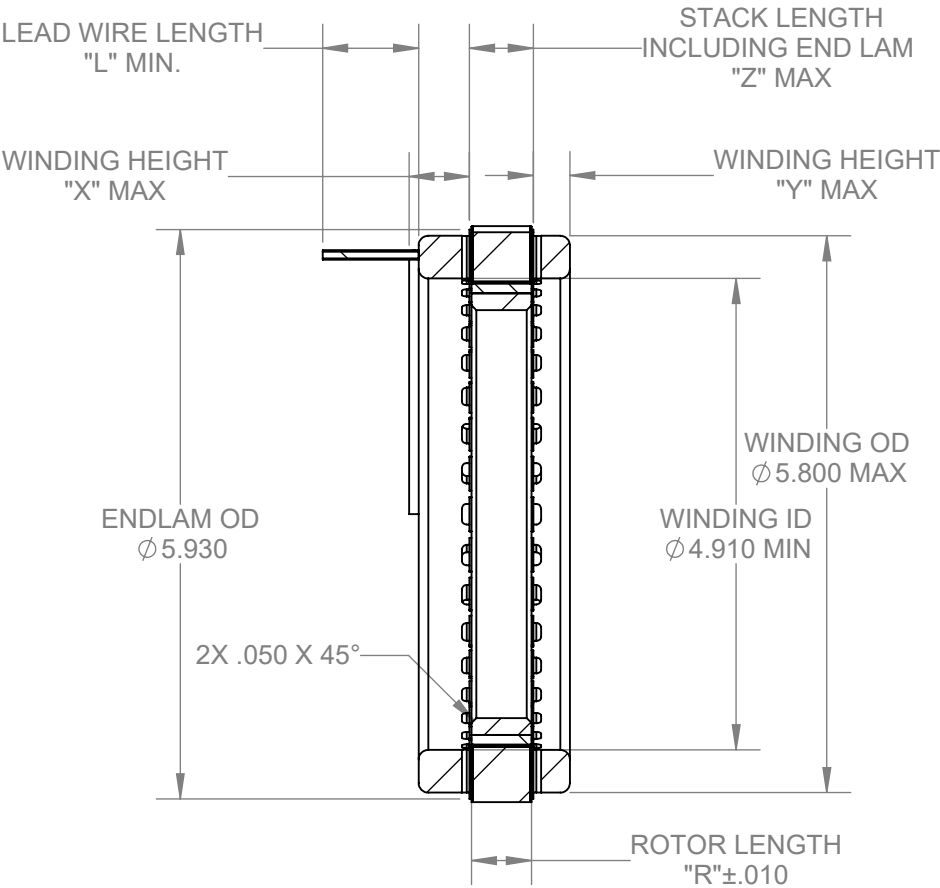
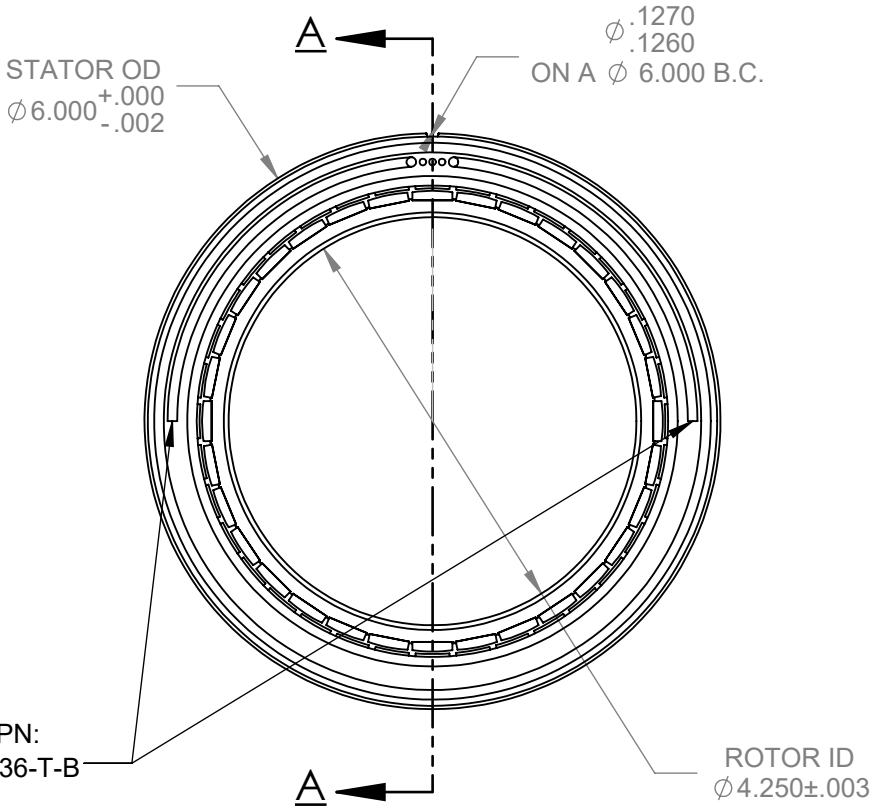


PROPRIETARY STATEMENT: THIS DOCUMENT CONTAINS CONFIDENTIAL INFORMATION PROPRIETARY TO AVEOX, INC. IT MAY NOT BE DUPLICATED IN WHOLE OR IN PART, DISCLOSED TO UNAUTHORIZED PERSONS, OR USED IN THE MANUFACTURE OF PARTS, ASSEMBLIES, OR FOR MANUFACTURING PROCESSES DEFINED HEREIN, WITHOUT PRIOR WRITTEN PERMISSION FROM AVEOX, INC.

REVISIONS			
REV.	DESCRIPTION	DATE	APPROVED
A	INITIAL RELEASE PER ECO # 7785	11/6/2019	SEE ECO APPROVAL

NOTES: (UNLESS OTHERWISE SPECIFIED)

1. STATOR LEAD WIRE PER M22759/9
PHASE A: RED
PHASE B: WHITE
PHASE C: BLACK
2. SEE TABLE FOR CONFIGURATION



SECTION A-A

UNLESS OTHERWISE SPECIFIED: DIMENSIONS ARE IN INCHES			CONTRACT No.		AVEOX, INC. 2265A Ward Avenue Simi Valley, CA. 93065 805-915-0200 (Phone) 805-915-0201 (FAX)	
TOLERANCE ON ANGLE: $\pm 0.5^\circ$ ON DECIMALS: INCH MILLIMETER SURFACE (µin.) .XX $\pm .01$.X $\pm .5$ mm .XXX $\pm .005$.XX $\pm .1$ mm REMOVE ALL BURRS BRAKE CORNERS R.005/.010. INTERPRET DRAWING PER ASME Y14.5-2009 DO NOT SCALE DRAWING DIMENSIONS APPLY AFTER SURFACE FINISH			APPROVALS		DATE	
THIRD ANGLE PROJECTION			DRAWN		11/6/19	
			CHECK			
			ENGINEER			
			SIZE		CAGE CODE	
			B		1C2S2	
			DWG No.		6100325-XX	
			SCALE: NONE		SHEET 1 OF 2	

4

3

2

1

PROPRIETARY STATEMENT: THIS DOCUMENT CONTAINS CONFIDENTIAL INFORMATION PROPRIETARY TO AVEOX, INC. IT MAY NOT BE DUPLICATED IN WHOLE OR IN PART, DISCLOSED TO UNAUTHORIZED PERSONS, OR USED IN THE MANUFACTURE OF PARTS, ASSEMBLIES, OR FOR MANUFACTURING PROCESSES DEFINED HEREIN, WITHOUT PRIOR WRITTEN PERMISSION FROM AVEOX, INC.

REVISIONS			
REV.	DESCRIPTION	DATE	APPROVED
-	See Sheet1	-	-

PART NUMBER	DESCRIPTION	ROTOR LENGTH "R"	LEAD WIRE AWG	LEAD WIRE LENGTH "L"	STACK LENGTH "Z" INCLUDING ENDLAM	ENDTURN HEIGHT, LEAD SIDE "X"	ENDTURN HEIGHT, BOTTOM "Y"
6100325-01	O&M DWG, STATOR AND ROTOR SET, 6006-32P/11, SENSORLESS	0.625	16	12	0.705	0.63	0.38
6100325-02	O&M DWG, STATOR AND ROTOR SET, 6012-32P/11, SENSORLESS	1.250	16	12	1.33	0.63	0.38
6100325-03	O&M DWG, STATOR AND ROTOR SET, 6015-32P/11, SENSORLESS	1.500	16	12	1.58	0.63	0.38
6100325-04	O&M DWG, STATOR AND ROTOR SET, 6018-32P/11, SENSORLESS	1.875	16	12	1.955	0.63	0.38
6100325-05	O&M DWG, STATOR AND ROTOR SET, 6025-32P/11, SENSORLESS	2.500	16	12	2.58	0.63	0.38
6100325-06	O&M DWG, STATOR AND ROTOR SET, 6030-32P/11, SENSORLESS	3.000	16	12	3.08	0.63	0.38

AVEOX

POWER TO MOTION

AVEOX, INC.

2265A Ward Avenue Simi Valley, CA. 93065

805-915-0200 (Phone) 805-915-0201 (FAX)

TITLE:

O&M DWG, STATOR AND ROTOR SET, 6000, 32P, SENSORLESS TABULATED

SIZE	CAGE CODE	DWG No.	REV
B	1C2S2	6100325-XX	A

SCALE: NONE	SHEET	2 OF 2
-------------	-------	--------

FORM: 6890115-02 Rev. C

B

A

4

3

2

1